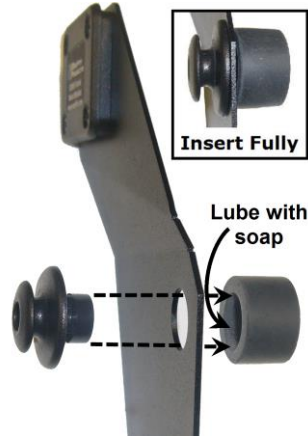
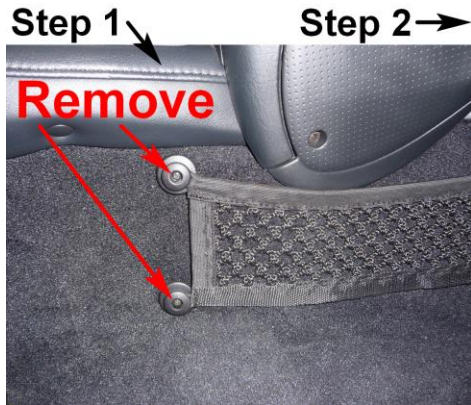


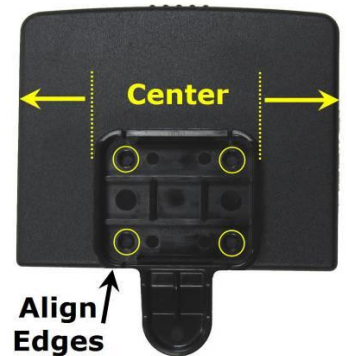
# Modifry® Cup Holder Bracket Installation Years 2000 to 2005

1. Remove the elastic net from the 2 retaining buttons nearest to the seat and remove the buttons using a Philips screw driver. Set aside one of the screws as it won't be used.
2. Insert one button through the top hole in the bracket and into the rubber spacer. If it's hard to insert fully you can use a little soap on the rubber spacer.
3. Position the bracket over the bottom screw hole and use the original screw to hold the button in place (not tight).
4. For the top button, replace the original screw with the longer one supplied in the kit and tighten firmly, but remember you are screwing into plastic so be careful not to strip the threads.
5. Now tighten the bottom button screw and replace the elastic net over the retaining buttons.



## Installing the top clip on the cup holder

- Position the top clip on the back of the cup holder as shown in the photo and insert the supplied thread-forming screws into the pre-drilled holes using a Philips screw driver. Do not over-tighten the screws – remember you are screwing into plastic.  
OR
- If you are using the bracket with a previously purchased cup holder, drill 4 pilot holes using a 7/64" drill bit at the locations marked by the yellow circles. Then attach the clip using the supplied thread-forming screws.



## WARNING – You can break the quick-clip if you don't follow these usage instructions

When attaching the cup holder to the bracket, (1) hold the cup holder at an angle and engage the top part first, then (2) apply pressure at the bottom to snap the clip in place. To remove the cup holder DO NOT SQUEEZE THE RELEASE LEVER, simply pull on the release lever and the clip will come off easily. Squeezing can cause the plastic retaining clip to bend and weaken.

